

KTC-KTF Series

Linear Motion Infinite Resolution Position Transducers

Ordering Code

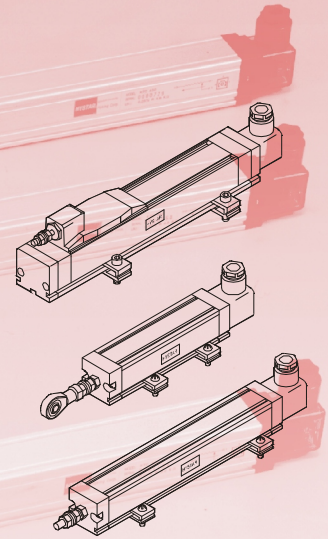
KTC - 100 - 01

KTC'S MECHANICAL CONNECTION TYPE
 01:KTC-01(Rod End Bearing)
 02:KTC-02(Link Ball)

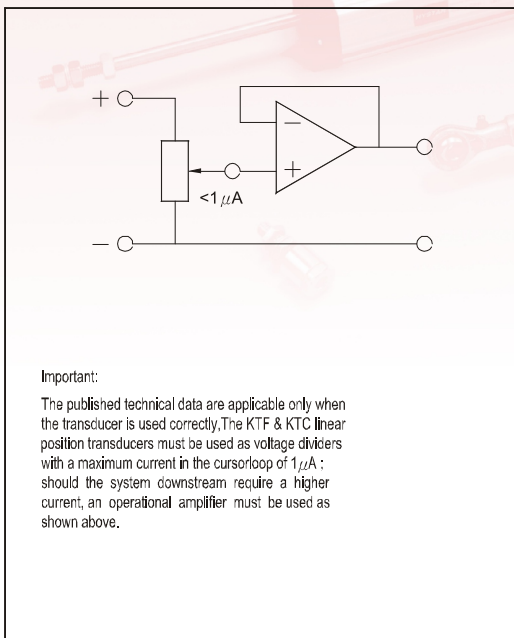
ELECTRICAL TRAVEL
 75:75mm
 100:100mm
 150:150mm
 225:225mm
 300:300mm
 375:375mm
 450:450mm
 525:525mm
 600:600mm
 750:750mm
 900:900mm

SERIES NUMBER
 KTC:Rod Type.(Controlling rod in stainless steel.)
 KTF:Rodless Type.

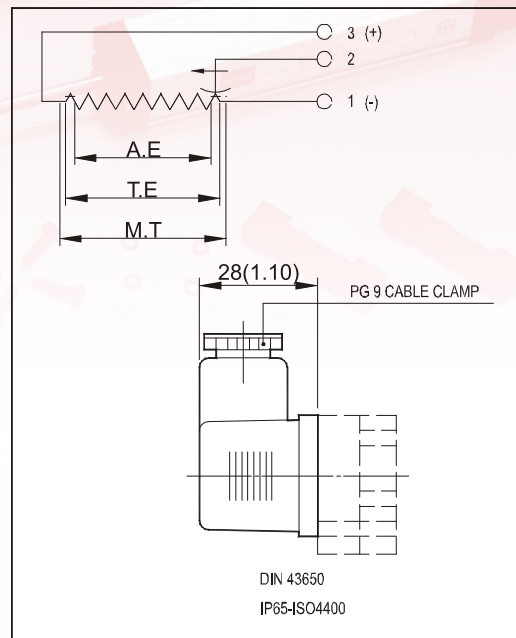
(Mounting kits,and DIN connector as standard with no extra cost.)



RECOMMENDED MEASUREMENT CIRCUIT



ELECTRICAL CONNECTIONS



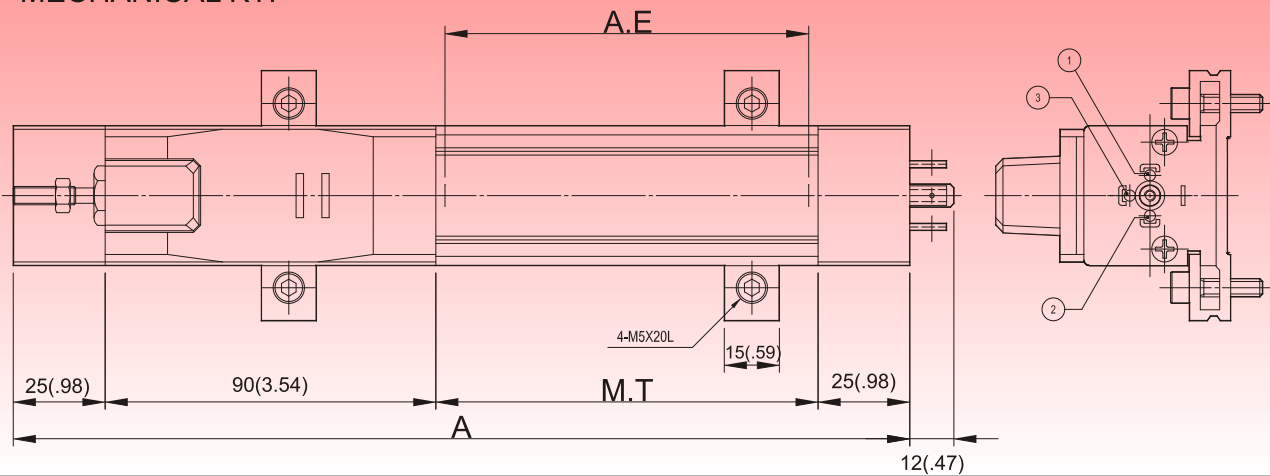
RATINGS

| KTF Series | | 100 | 150 | 225 | 300 | 375 | 450 | 525 | 600 | 750 | 900 | 1000 |
|-------------------------------|--------------|---------------|----------------|----------------|----------------|----------------|----------------|----------------|----------------|----------------|-----------------|-----------------|
| Total Electrical Travel(T.E) | mm (inch) | 102 (4.02) | 152 (5.98) | 229 (9.02) | 305 (12.01) | 381 (15.00) | 457 (17.99) | 533 (20.98) | 610 (24.02) | 762 (30.00) | 914 (35.98) | 1016 (40.00) |
| Active Electrical Travel(A.E) | mm (inch) | 100 (3.94) | 150 (5.91) | 226 (8.90) | 302 (11.89) | 378 (14.88) | 455 (17.91) | 531 (20.91) | 607 (23.90) | 759 (29.88) | 912 (35.43) | 1013 (39.88) |
| Resistance $\pm 0\%$ | K Ω | 3.4 | 5.0 | 2.4 | 3.2 | 4.0 | 4.8 | 5.6 | 6.4 | 8.0 | 9.6 | 10.7 |
| Independent Linearity | $\pm\%$ | 0.07 | 0.07 | 0.07 | 0.07 | 0.07 | 0.05 | 0.05 | 0.05 | 0.05 | 0.05 | 0.05 |
| Mechanical Travel(M.T) | mm (inch) | 104 (4.09) | 155 (6.10) | 231 (9.09) | 307 (12.09) | 384 (15.12) | 460 (18.11) | 536 (21.10) | 612 (24.09) | 765 (30.12) | 917 (36.10) | 1019 (40.12) |
| Resolution | | infinite | | | | | | | | | | |
| Recommended Cursor Current | μA | <1 | | | | | | | | | | |
| Temperature Range | $^{\circ}C$ | -55~+125 | | | | | | | | | | |
| Dimensions A | mm (inch) | 245 (9.65) | 296 (11.65) | 372 (14.65) | 448 (17.64) | 525 (20.67) | 601 (23.66) | 677 (26.65) | 753 (29.65) | 906 (35.67) | 1058 (41.65) | 1160 (45.67) |

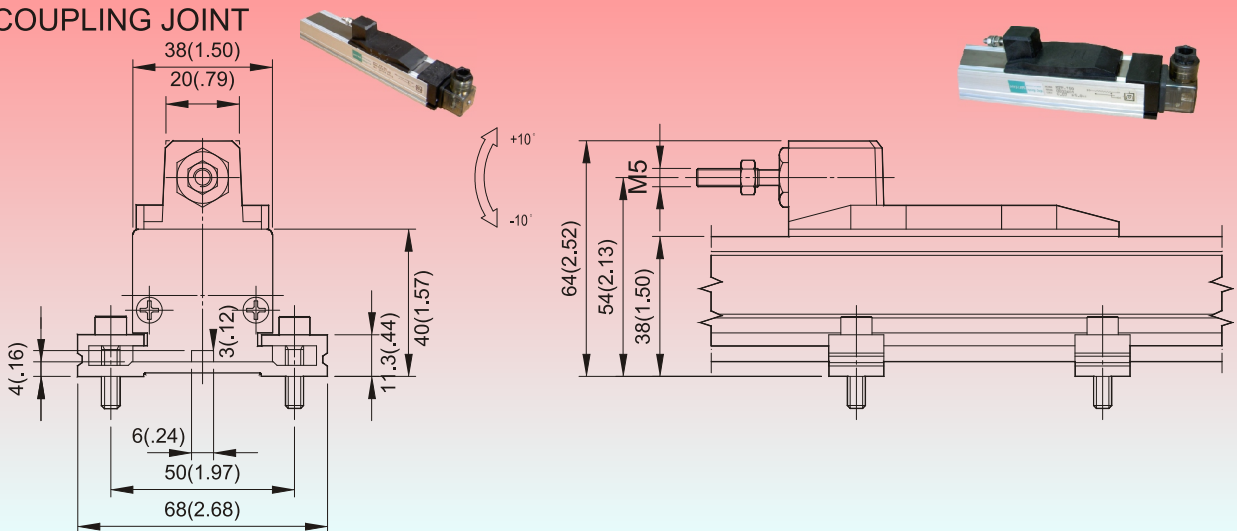
DIMENSIONS

mm(inch)

MECHANICAL KTF



COUPLING JOINT



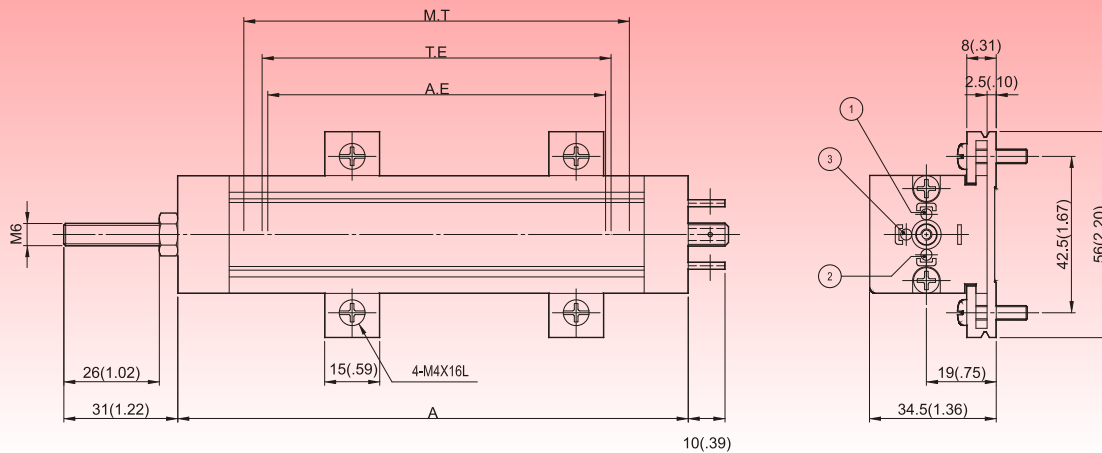
RATINGS

| KTC Series | | 75 | 100 | 150 | 225 | 300 | 375 | 450 | 525 | 600 | 750 | 900 |
|-------------------------------|--------------|---------------|---------------|---------------|----------------|----------------|----------------|----------------|----------------|----------------|----------------|----------------|
| Total Electrical Travel(T.E) | mm (inch) | 76 (2.99) | 102 (4.02) | 152 (5.98) | 229 (9.02) | 305 (12.01) | 381 (15.00) | 457 (17.99) | 533 (20.98) | 610 (24.02) | 762 (30.00) | 914 (35.98) |
| Active Electrical Travel(A.E) | mm (inch) | 75 (2.95) | 100 (3.94) | 150 (5.91) | 226 (8.90) | 302 (11.89) | 378 (14.88) | 455 (17.91) | 531 (20.91) | 607 (23.90) | 759 (29.88) | 912 (35.91) |
| Resistance $\pm 20\%$ | k Ω | 2.5 | 3.4 | 5.0 | 2.4 | 3.2 | 4.0 | 4.8 | 5.6 | 6.4 | 8.0 | 9.6 |
| Independent Linearity | $\pm \%$ | 0.07 | 0.07 | 0.07 | 0.07 | 0.07 | 0.07 | 0.05 | 0.05 | 0.05 | 0.05 | 0.05 |
| Mechanical Travel(M.T) | mm (inch) | 79 (3.11) | 104 (4.09) | 155 (6.10) | 231 (9.09) | 307 (12.09) | 384 (15.12) | 460 (18.11) | 536 (21.10) | 612 (24.09) | 765 (30.12) | 917 (36.10) |
| Resolution | | infinite | | | | | | | | | | |
| Recommended Cursor Current | μA | <1 | | | | | | | | | | |
| Temperature Range | $^{\circ}C$ | -55~+125 | | | | | | | | | | |
| Dimensions A | mm (inch) | 139 (5.47) | 164 (6.46) | 215 (8.46) | 291 (11.46) | 367 (14.44) | 444 (17.48) | 520 (20.47) | 596 (23.46) | 672 (26.46) | 825 (32.48) | 977 (38.46) |

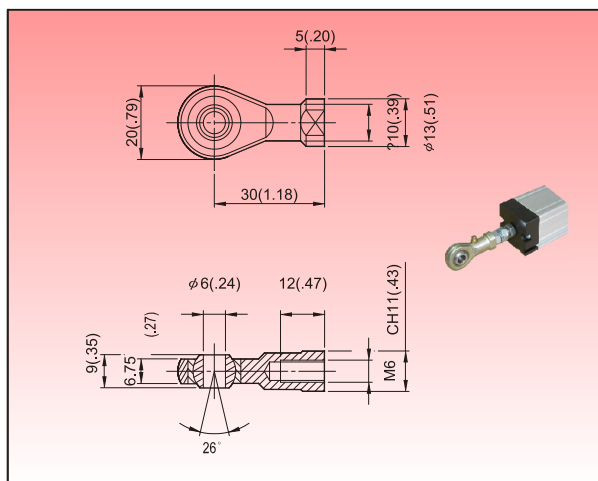
DIMENSIONS

mm(inch)

MECHANICAL KTC



ROD END BEARING (KTC-01)



LINK BALL (KTC-02)

